

NEW YORK archives

Educator Guide

Summer 2020

New York Archives magazine is a donor-funded educational product published quarterly by the NYS Archives Partnership Trust. A discounted subscription rate for educators is available. For more information, please visit us at www.nysarchivestrust.org.



NEW YORK archives

The Beginnings of Social Work

In his article for this issue of *New York Archives* Magazine, Eric Cimino explores how the Travelers Aid Society served as an early form of social aid for women in New York. Many threats existed for women of all races, ethnicities, and religions as they traveled to the United States during the early 1900s. Cimino mined the archives to tell the story of an organization established to help female travelers reach their destination safely. As students read this article, they will discover the ways individuals can help create a safer community by identifying a need and creating a solution to the problem.

Compelling Question

How can individuals help to solve the problems they see in society?

Learning Objectives

Students will be able to:

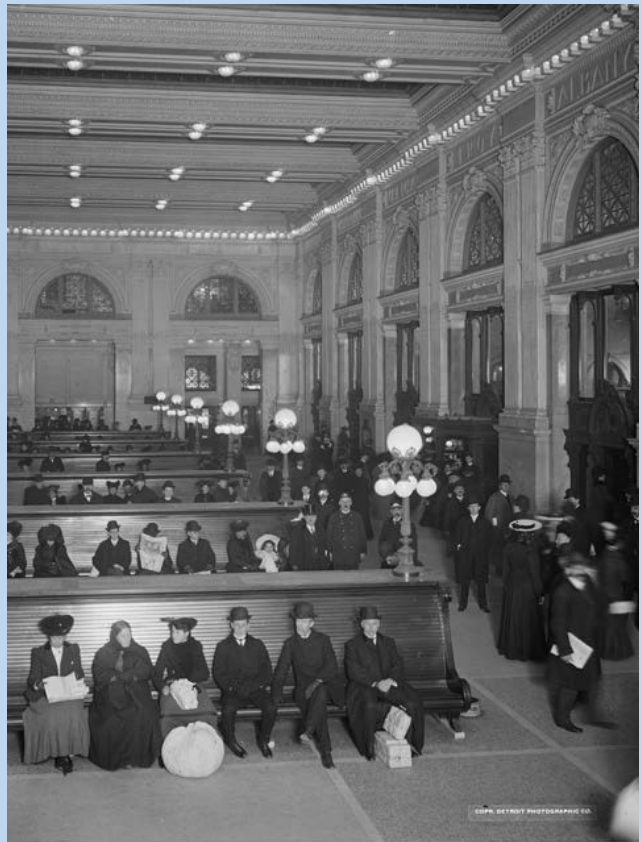
- create meaningful and persuasive understandings of the past by fusing disparate and relevant evidence from primary and secondary sources and drawing connections to the present

New York Archives magazine is a donor-funded educational product published quarterly by the NYS Archives Partnership Trust. A discounted subscription rate for educators is available. For more information, please visit us at www.nysarchivestrust.org.

Selection

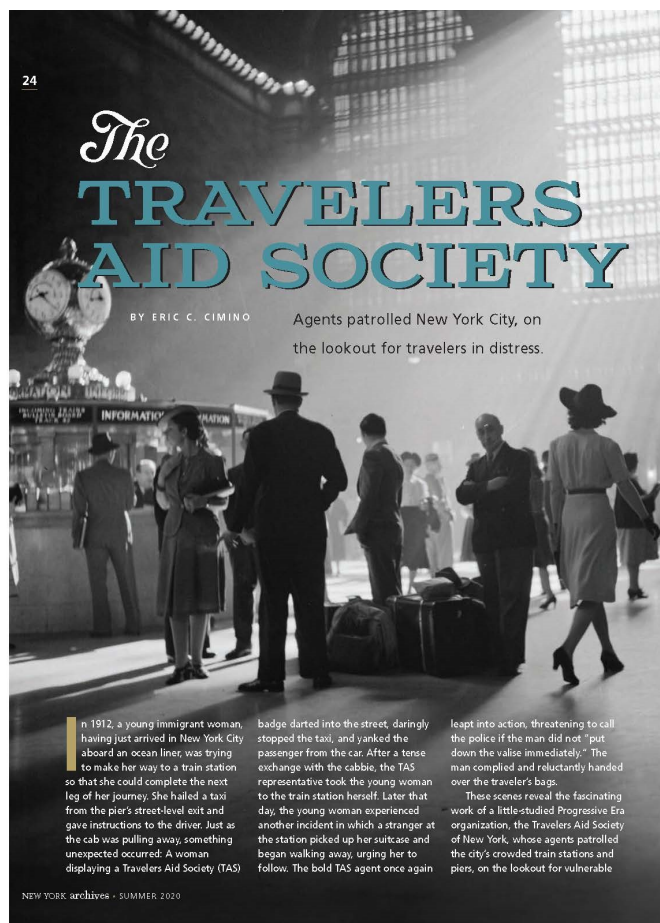
Travelers Aid Society

By Eric C. Cimino



Library of Congress

This guide includes supporting questions to guide students in the reading of the article and analysis questions for understanding the **primary sources**. All educational materials are aligned to the *New York State Social Studies Framework*. The learning objectives are taken directly from the *Social Studies Practices* and the content fits within the framework.



Setting the Stage

Show this video from [pbslearningmedia.org](https://ny.pbslearningmedia.org/resource/iptv_wbot_20151115_westbyorphantrain_04/wbot_20151115_westbyorphantrain_04/) and discuss the idea of “social work” as it relates to the Orphan Train Movement. https://ny.pbslearningmedia.org/resource/iptv_wbot_20151115_westbyorphantrain_04/wbot_20151115_westbyorphantrain_04/

Guided Reading Questions

1. What was the purpose of the Travelers Aid Society?

2. Why was the Travelers Aid Society created?

3. Who did the Travelers Aid Society help?

4. Who worked for the Travelers Aid Society?

5. List two specific ways the Travelers Aid Society helped individuals in the early 1900s?

6. How was the Travelers Aid Society an early form of social work?

Document Analysis



Courtesy: Library of Congress

Analysis Questions

1. What objects and people do you see in this photograph?

2. Where was this photograph taken? Provide evidence from the photograph for your answer.

3. What dangers might the individuals in the photograph face in this place?
